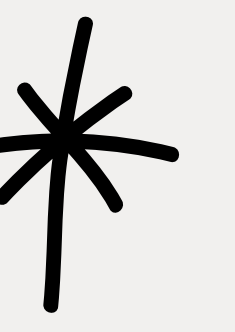


Sociology Learning Journey



Your study of sociology will broaden your awareness of society and help you to become responsible and knowledgeable agents for change in the world. The curriculum exposes you to a wide range of topics relevant to your own life and helps you distinguish between fact and opinion. It challenges you to look beyond appearances and set aside your own personal beliefs, heightening your curiosity about why individuals, groups, communities and whole societies work the way they do. In doing so, sociology will provide you with new ways to understand and engage with contemporary society that will ultimately mean that you will be equipped with the tools to take part in the critical conversations of humankind..

BEYOND MAYFIELD

- Lawyer
- Social work
- Journalism
- Researcher
- Teaching
- Police officer
- Further study
- ... anything you put your mind to!

AQA SOCIOLOGY



Year 13

Mock Exam

You will sit all three exam papers in January 2024. This will be an opportunity to assess your progress and will help you focus your revision.

Sociological Debates

A synoptic study of the key disciplinary debates that have underpinned the course. In particular, the extent to which sociology can be considered scientific, the relationship between theory and methods and the relationship between sociology and social policy.

Revision

Examination preparation including revision of all content in the A Level course and opportunity to refine examination technique

Stratification and Differentiation

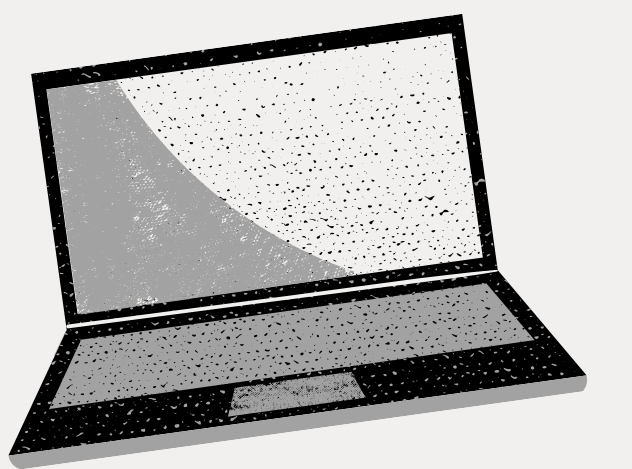
An analysis of inequality in the UK including the life chances different social groups have, poverty in the UK and the impact of changes in globalisation, politics and authority on social stratification.

Families and Households

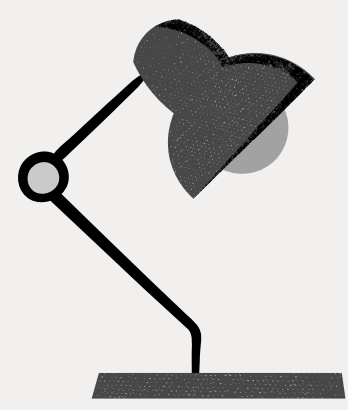
A sociological analysis of the role of the family in society. Includes consideration of changing patterns of marriage, family diversity, childhood and gender roles within the family.

Sociological Theories

An in-depth analysis of the three major sociological perspectives (consensus, conflict and interactionism) and the concepts of modernity and postmodernity in relation to sociological theory.



Year 13



Year 12

Crime and Deviance

An in-depth study into crime in the UK with a particular focus on the social distribution of crime (by ethnicity, gender and social class) and sociological explanations for these patterns.

Methods in Context

The application of knowledge of research methods. You will learn to evaluate the strengths and limitations of any of the six main research methods for researching a particular topic within the sociology of education.

Summer Exam

You will sit two full exam papers in the summer term. These will follow the format of Paper 1 and Paper 3.

Education

A consideration of the role of education in contemporary society, including a critical analysis of the relationships and processes in schools that can impact the achievement of different social groups

Research Methods

An introduction to the range of methods, sources of data and factors influencing the design of sociological research. You will be encouraged to consider the practical, ethical and theoretical issues arising from sociological research and apply these to case studies.

Introduction to Sociology

An introduction to key sociological concepts such as socialisation, culture, norms and values. You will identify the key sociological theories and their perspective on society which will be applied to topics throughout the course.



Year 12

